

City High Business Casual Dress Code

- ★ Goal is to Prepare Students for Dressing in the Workplace.
- ★ Students Must be in Dress Code Upon Entering and Leaving the Building.
- ★ Students Out of Dress Code will be Sent Home to Change.
- ★ Missing Class Due to being out Dress Code is an Unexcused Absence.



Students Who Identify As Female



- ★ Dress Blouse, Shirt with a Collar, Turtleneck
- ★ Sweaters (V-neck or crewneck), Blazers
- ★ Button-up sweaters must be worn with a collared shirt
- ★ Dress Pants: Full length or Ankle (No capri pants or shorts)



Students Who Identify As Female

- ★ Dresses and Skirts: Must be Knee Length or Longer (on all sides)
- ★ Dress Shoes with a Closed Toe (No boots)



Students Who Identify As Male



- ★ Shirts: Button-downs, Polos, Turtlenecks
- ★ Must be tucked in
- ★ Sweaters (V-neck or Crewneck)
- ★ Wear a sweater if you do NOT want to tuck your shirt in



Students Who Identify As Male



- ★ Pants: Full Length Pants Only, Must Originate At The Waist
- ★ Shoes: Dress Shoes or Loafer Type Shoes
- ★ No Sperry's, Birkenstock's, Hey Dude's or boat shoes

YES



NO



What **NOT** To Wear



T-shirt



Strapless shirt



Camouflage



Henley shirt



Sweatshirt



Cami (unless as an undershirt)



Hoods



Denim



Skirts above the knee



What **NOT** To Wear

- ★ Denim or looks like denim
- ★ Any pants with pockets stitched on the back



Shorts



Pants gathered at the bottom



Leggings



Capris



What **NOT** To Wear

YES



NO

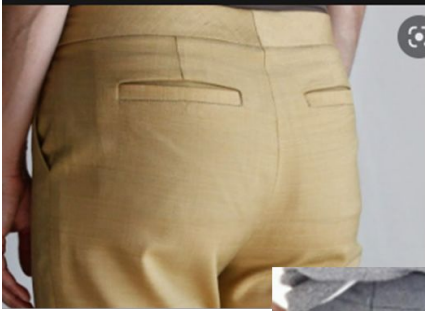


- ★ No Writing
- ★ No Large Logos (must be quarter size or smaller)



More Pant Examples

YES



NO

